



FULL ZIP FRENCH TERRY SWEATSHIRT

Felpa da uomo con cerniera invisibile completa e collo alto con tasche laterali.

Dettagli:

- Polsini e fondo del capo in costina 2x1 con elasthan.
- Felpa non garzata.
- Zip nascosta.
- Tasche laterali.
- 235/240 g/m² approx.
- 60% Cotone / 40% Poliestere.

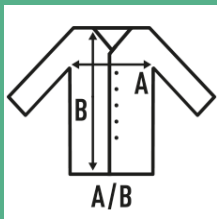
60% Cotone / 40% Poliestere. Peso: 235/240 g/m² approx.



Box/Box 25



Pack/Pack 25



SIZE/Size

| EU | S | M | L | XL | XXL |
|-------|-------|-------|-------|-------|-------|
| Width | 54 cm | 56 cm | 58 cm | 60 cm | 62 cm |
| | 69 cm | 72 cm | 74 cm | 76 cm | 78 cm |



White
(WH)



Black
(BK)



Red
(RD)



Navy
(NY)



Royal Blue
(RB)



Grey Melange
(GM)