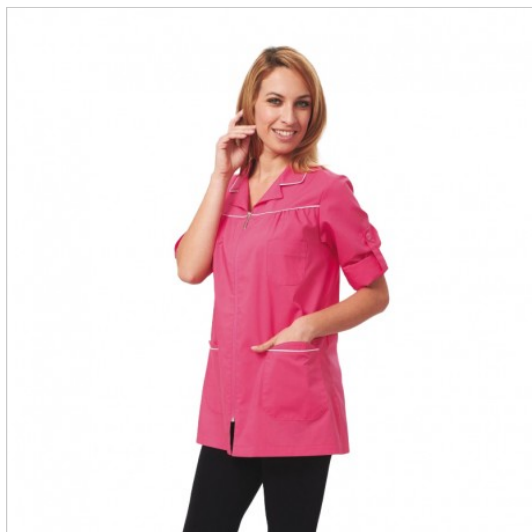


SCHEDA PRODOTTO



Tunic Elita Fuchsia Saggi

Riferimento: SIGCS1316/3010

Areas of Use	Beauty
Color	Colorful
	Fuchsia
Composition Fabric	65% Polyester 35% Cotton
Cuffs	with Button
Design	Monochrome
Fabric weight	130 gr/mq
Kind of Closure	with Zipper
Length	Short
Model	Woman
Number of Pockets	Three
Product Line	Elita
Product category	Short coats
Season	All season
Secondary Color	White
Special Sizes	Big Size
Type of Neck	Classic
Type of Sleeves	Long