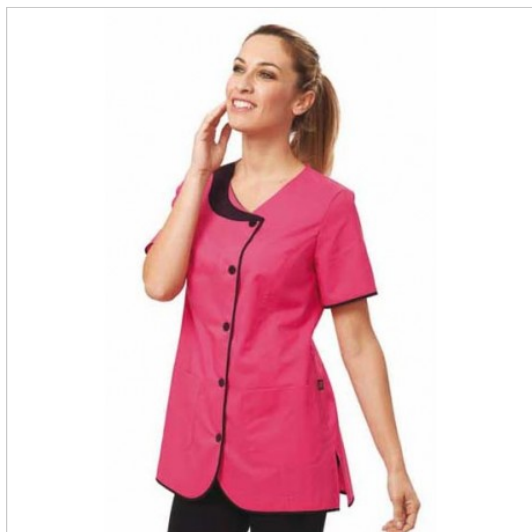


SCHEDA PRODOTTO



Tunic Dora Fuchsia e Black Saggi

Riferimento: SIGCS1306/3711

Areas of Use	Beauty
Color	Colorful
	Fuchsia
Composition Fabric	65% Polyester 35% Cotton
Design	Monochrome
Fabric weight	130 gr/mq
Kind of Closure	Fixed buttons
Length	Short
Model	Woman
Number of Buttons	Five
Number of Pockets	Two
Product Line	Dora
Product category	Short coats
Season	Summer
Secondary Color	Black
Special Sizes	Big Size
Type of Neck	V-Neck
Type of Sleeves	Short