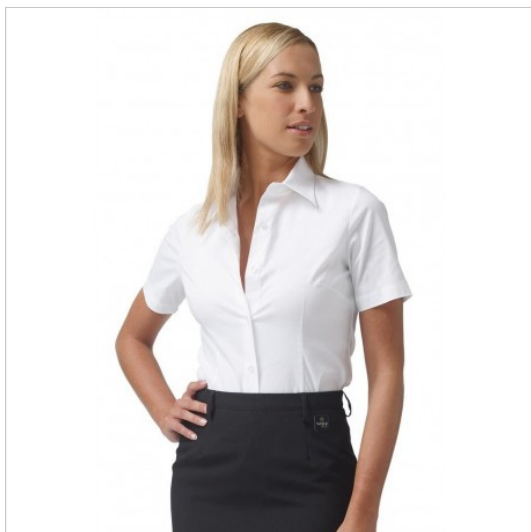


SCHEDA PRODOTTO



Shirt Barbara White SIGGI

Riferimento: SIGCM0165-0001

Areas of Use	Hotel Industry
	Food & Beverage
	CATERING
Color	White
Composition Fabric	97% Cotton - 3% elastan
Design	Monochrome
Fabric Type	Stretch
Fabric weight	130 gr/mq
Kind of Closure	Fixed buttons
Kind of fit	Slim
Model	Woman
Number of Buttons	Six
Number of Pockets	without Pockets
Product Line	
Product category	Shirts
Season	Summer
Type of Neck	Classic
Type of Sleeves	Short